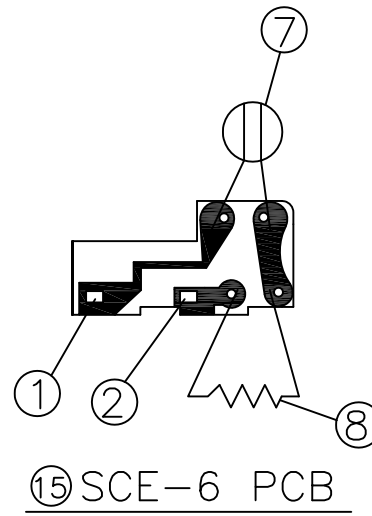
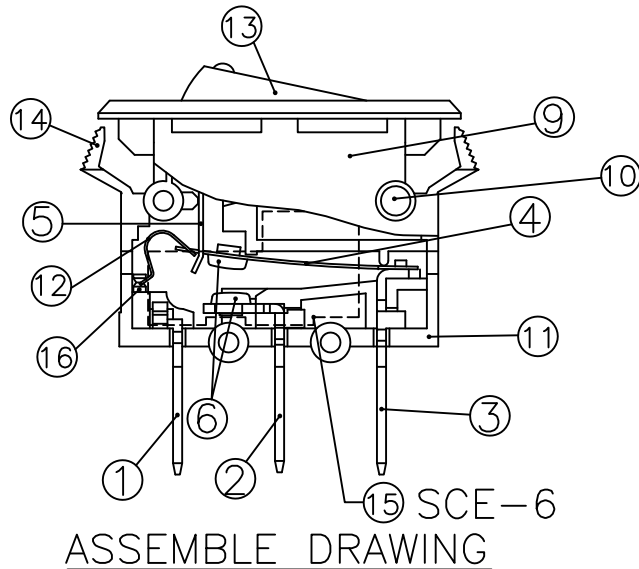
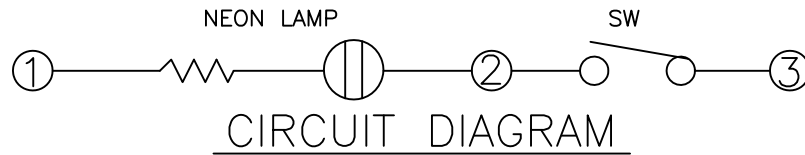


THICKNESS	DIMENSION A
0.8 ~ 1.0	28.4 ± 0.1
1.1 ~ 1.4	28.8 ± 0.1
1.5	29.0 ± 0.1

SUGGESTED MOUNTING HOLE

- NOTES :
1. Model : SS-001
 2. Specification (Voltage , Ampere , Cycle) and circuit diagram shall be permanently and legibly marked on the surface of cover.
 3. Parts and materials as per below list.
 4. Unless otherwise specified dimensions are in millimeters. tolerance : $\pm 0.3\text{mm}$
 5. Do not scale drawing.
 6. Structure and dimension as per left drawing.
 7. UL file No. : E152074.



NO.	PARTS NAME	QTY PCS/SET	MATERIAL	REMARK
1	terminal #1	1	copper alloy	tin-plated
2	terminal #2	1	copper alloy	tin-plated
3	terminal #3	1	copper alloy	tin-plated
4	bimetal	1	bi-metal	
5	connection rod	1	SUS301	
6	electrical contact	2	AgSnO ₂	
7	neon lamp	1		
8	resistor	1		
9	cover	1	nylon+G.F.	
10	rivet	4	aluminum	
11	body	1	nylon+G.F.	
12	bow spring	1	SUS301	
13	knob	1	PC	
14	mounting tabs	2	nylon	
15	sce-6 pcb	1		
16	screw	1	cold roll steel	black coated

捷森電子工業股份有限公司				
MAT'L AS TABLE	UNIT mm	SCALE NONE	TITLE CIRCUIT BREAKER WITH POWER SWITCH	
FINISH AS TABLE		SHEET 1/1	ART. NO. SS-001	REV A
APPR.	DSN YXD	DATE 2016.02.25		