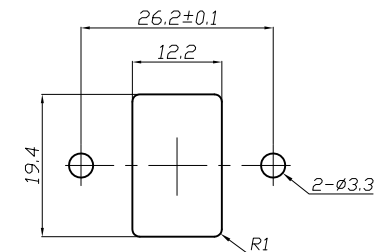
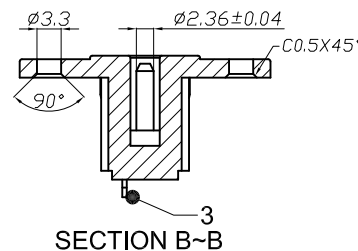
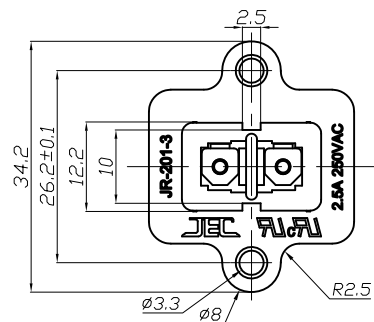
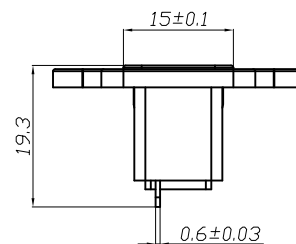
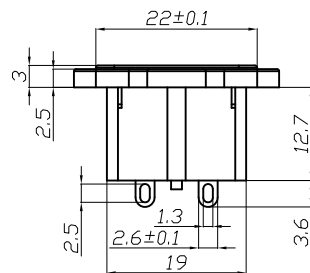
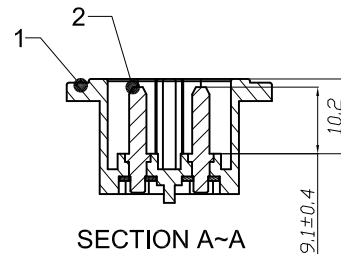
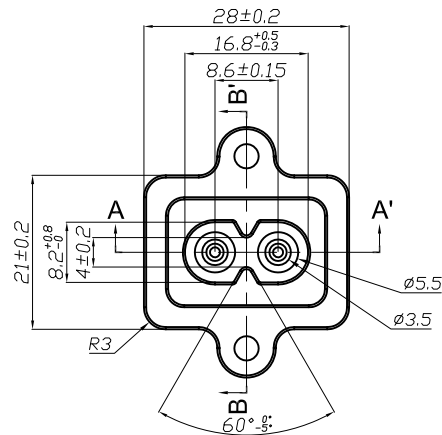









编号	零件名称	数量	材质说明	备注
1	Body	1	PA	
2	Pin	2	Brass Alloy,Ni-Plated	
3	Terminal	2	Brass Alloy,Tin-Plated	



PANEL CUT-OUT

NO.	日期 DATE	描述 DESCRIPTION	修订者 REVISED BY	规格 SPECIFICATION				 公差 TOLERANCES	已标注尺寸以外之尺寸公差 X±0.3/ .XX±0.1 角度 ±2° TOLERANCES UNLESS OTHERWISE SPEC.X±0.3/ .XX±0.1, ANG.±2°				
				制图 DRAWN BY	设计 DESIGNED BY	审核 CHECKED BY	核准 APPROVED BY	单位 UNIT	mm	机种名称 MODEL NAME	SOCKET	机种编号 MODEL NO	JR-201-3
				 LIXIU 2022.01.07 技术部	 HUIFANG 2022.01.07 技术部	 TangB 2022.01.07 技术部		比例 SCALE	1 : 1	捷森電子工業股份有限公司 JACKSON ELECTRONICS IND. CORP.			
			日期 DATE					2022.01.07					
